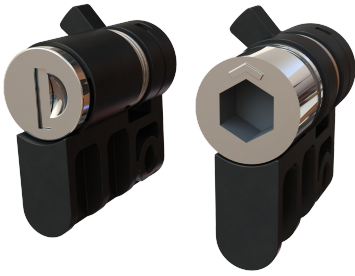


# VISION PLUG



The Vision Plug can be used with all Vision products designed for a 40 mm profile cylinder. It is used for either a tool operated insert or a key lock cylinder. The plug can be used as long-term solution as well as to keep the cabinet closed until the end user replace the plug with their own profile cylinder.

Both insert and cylinder version is spring loaded and goes back to closed position by itself after opening. Mounting screw is delivered with the plug.



## MATERIAL

**Cylinder:** Zinc die cast, stainless steel 304 cap and dust shutter

**Housing:** Glass fibre reinforced Polyamide (PA6GF30)

**Insert:** Zinc die cast, chrome plated or black powder coated

**Screw:** Steel, zinc plated

## RELATED PRODUCTS

**Handles:** 1-005.10, 1-005.15, 6-020, 6-010, 1-002.02, 1-002.12

**Keys:** 2-372, 2-370

Use the Index Code at [industrilas.com](http://industrilas.com)

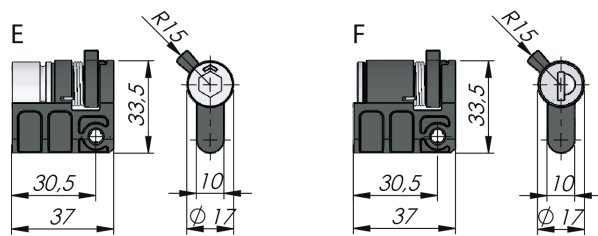
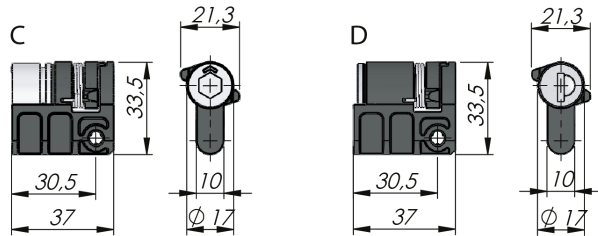
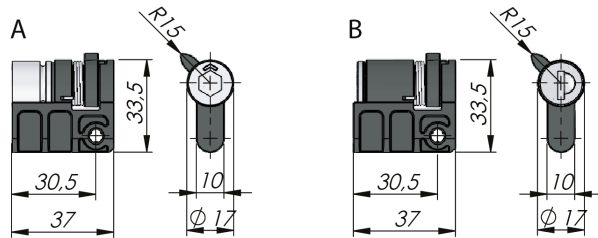
## TECHNICAL INFORMATION

Drawing A and B for ErgoLine.

Drawing C and D for swing handle.

Drawing E and F for lift handle.

Round cylinder version delivered with two keys.



**Make your selections in each column to create your article number (AAAAAA-BCDD)**

AAAAAA Housing	B For this product	C Surface treatment insert	DD Insert
511067 VISION Plug PA6 / Zinc inserts	5 Ergo Line [A-B]	0 For cylinder and push-button versions	01 Square 6
	6 Swing handle [C-D]	2 Chrome plated	03 Square 7
	7 Lift handle [E-F]	6 Black powder coated	05 Square 8
			07 Square 8 / slotted 11 Square 8 / recessed 14 Triangle 7 15 Triangle 8 16 Triangle 10 22 Double Bit 3 24 Double Bit 5 26 Slotted 29 Slotted recessed 32 Hexagon 11 34 Recessed hexagon 8 35 Recessed hexagon 10 36 Recessed hex 8 / 3 mm pin 80 Keyed to differ 81 Keyed alike IL101 82 Keyed alike IL0333